

**IMPACT OF THE ADOPTION OF ADVANCED INFORMATION AND
COMMUNICATION TECHNOLOGIES ON FIRM PERFORMANCE IN
THE CANADIAN MANUFACTURING SECTOR**

by

John Baldwin* and David Sabourin**

Micro Economic Analysis Division

Statistics Canada

*voice 951-8588

email baldjoh@statcan.ca

**voice 951-3735

email: sabodav@statcan.ca

Please do not quote without authors' permission

ABSTRACT:

This paper investigates the evolution of the industrial structure in the Canadian manufacturing sector and its relationship to technological change by examining the take-up of new advanced technologies and how it is related to the stochastic growth process in the plant population. Its framework is grounded in the view that growth is a stochastic process that involves learning. Experimentation with new technologies rewards some firms with superior growth and profitability. Examining how growth is associated with the choice of different technology strategies indicates which of these is being rewarded.

The evolution of this process is studied by examining the relationship between the uptake of advanced technologies and the performance of plants in the manufacturing sector. This is done by using cross-sectional data on advanced technology use and by combining it with longitudinal panel data on plant performance. In particular, the paper examines the relationship between the use of advanced information and communications technology (ICT) and the growth in a plant's market share and its relative productivity.

The study finds that a considerable amount of market share is transferred from declining firms to growing firms over a decade. At the same time, the growers increase their productivity relative to the losers. Those technology users that were using communications technologies or that combined technologies from different classes increased their relative productivity the most. In turn, gains in relative productivity were accompanied by gains in market share. Other factors that were associated with gains in market share were the presence of R&D facilities and other innovative activities.

1. INTRODUCTION

This paper investigates the evolution of industrial structure in the Canadian manufacturing sector and its relationship to technological change by examining the take-up of new advanced technologies and how it is related to the stochastic growth process in the firm population. Its framework is grounded in the view that growth is a stochastic process that involves learning. Production opportunities are not unique and the growth of individual firms occurs in a world where each explores which advanced technologies out of a set of many technological possibilities might be the most suitable to its circumstances. Firms adopt new, advanced technologies as they learn about their possibilities and experiment with the applicability of the new advanced technologies to their specific situations. Experimentation rewards some firms with superior growth and profitability.

A range of new advanced technologies is available at any point in time. Not all firms will choose the same set. Nor will a particular set result in equal rewards across all environments. The environment faced by a firm and the history of the firm determine the end results of experimenting with new advanced technologies. What may be 'best practice' is difficult for firms to ascertain ex ante and only evolves as the selection process demonstrates which firms have taken the 'correct' decision.

New advanced technologies are adopted slowly into the production process because the amount of learning by experimentation is large. A large number of complementary machines and production processes have to be put in place before new advanced technologies can find useful applications¹. And finding the correct combination requires considerable trial and error. Mature technologies can be incorporated into the production process with the use of blue prints. When knowledge is readily codifiable and easily transferred from one firm to another, diffusion is rapid. By way of contrast, the introduction of new advanced technologies during the early phases of an industrial transformation is more akin to prototype construction. Plans are used as the foundation for a prototype, but the construct changes over time as experience dictates needed changes. Search takes place through a learning-by experimentation process.

This paper describes how this process evolves by examining the impact of advanced technology adoption on the performance of plants in the manufacturing sector by using cross-sectional data on advanced technology use and by combining it with longitudinal panel data on plant performance.

It focuses on technologies associated with the information technology (IT) revolution. The relatively cheap processing power of microchips has brought about a dramatic technological change in the manufacturing sector. On the one hand, these consist of a number of labour-saving technologies where computer assisted machinery has been developed to replace manual labour. For example, computer operated robots provide an efficient and safe alternative to humans for repetitive jobs like spot welding and painting.

¹ See Baldwin and Sabourin (2001) for a study of the importance of advanced engineering practices for advanced technology adoption.

Automated guided vehicle systems replace costly personal delivery. However, the truly dramatic element of the IT revolution has been the birth of ‘soft manufacturing’, which Bylinsky (1994) notes, differs from traditional manufacturing in that software and computer networks are more important than production machines. Furthermore, the purpose of the ‘soft-manufacturing’ technologies is to enhance rather than replace the abilities of humans. Flexible manufacturing systems with agility to provide information quickly to workers and to management allow for a high degree of customization at much lower cost than in the past. The IT revolution has allowed plants to deliver customized products in small quantities, changing product lines quickly to meet changing consumer demands.

The first section of the paper examines certain characteristics of the stochastic process that are relevant to the measures of firm and plant performance that are used in the paper. It enumerates the extent to which plants replace one another by transferring market share one to another over the ten-year period 1988 to 1997 and the extent to which this has been accompanied by changes in relative productivity and profitability.

The paper then studies the effect of technological change on productivity. It examines the relationship between the use of advanced manufacturing technology, such as programmable controllers, local area networks and computer-aided design and engineering equipment, and plant performance to determine the choices that are associated with growth. Not all plants have adopted new computer-based advanced technologies. We examine the relationship between changes in plant market share and relative productivity over the time period and the new advanced technologies that plants manage to successfully implement by 1998—showing which advanced technologies, in effect, are selected by the search and culling process that is associated with competition.

The economic performance data used in the study come from a longitudinal file developed from the Annual Survey (Census of Manufactures), which includes data on employment (production and non-production), labour productivity (value added per worker), wages and salaries, manufacturing and total shipments, and manufacturing and total value added for Canadian manufacturing plants during the period 1988 to 1997.² The economic performance data were linked to data on advanced technology use at the plant level derived from the 1998 Survey of Advanced Technology in Canadian Manufacturing. In what follows, we will be using plants as the unit of analysis.

2. THE GROWTH PROCESS

Growth and decline is constantly taking place in the manufacturing sector as some plants wrest market share away from others. The amount of change is large. Over the period 1988-97, some 47% of market share is transferred from those losing market share to those gaining market share within a 4-digit industry, on average. Growing continuers account for 26% of the gain in market share, while entrants account for the other 21%.

² Total value added differs from manufacturing value added because of non-manufacturing activities of manufacturing establishments that are intrinsic to the manufacturing operations of the firm.

Decline in market share, on the other hand, comes from declining continuers (17%) and exits (30%).

This turnover is made up of a large number of small changes, with many new firms that seize small amounts of market share and many incumbents who grow slightly at the expense of others. At the same time, there are a large number of exits, most of which are quite small and many incumbents who also decline. In the short run, much of this change is reversed—but in the longer run, over periods of a decade, the changes lead to substantial shifts in the relative rankings or position of industry participants.

The extent to which plant growth and decline leads to changes in relative rankings is presented in Table 1. Plant market shares at the 4-digit level are calculated for 1988 and for 1997 and then all establishments are assigned to quartiles in both the start year (1988) and the end year (1997) of the period, based on the rankings of their market share. Table 1 provides the movement of continuing establishments up and down the market share hierarchy.³ It gives the percentage of continuing plants, who started in a given quartile in 1988, that had made moved up a quartile or two, down a quartile or two, or stayed the same.

Throughout the decade, there has been substantial change in relative status. For example, of those continuing plants that were in the second quartile in 1988, 23% fell to the bottom quartile in 1997; 17% moved up to the third quartile; while 57% remained in the same quartile.

Table 1: Market Share Transition Matrix for Continuers (1988-1997)

	MARKET SHARE QUARTILES (1997)			
MARKET SHARE QUARTILES (1988)	Q1	Q2	Q3	Q4
	percentage of establishments			
Q1	82	15	3	0
Q2	23	57	17	2
Q3	2	22	60	16
Q4	2	2	13	83

There is somewhat greater inertia in the plants that started in the bottom or top quartile—partially because their movement possibilities are truncated, either in an upwards direction for the top quartile or downwards for the bottom quartile. Over eighty percent of the plants in these two groups remained in the same quartile group. Close to a fifth, though, had moved to the adjoining category.

Success in terms of growth of market share is accomplished in various ways. Plants may either improve their relative cost structure or may be able to produce higher quality products for which consumers are willing to pay higher prices. In either case, we would expect this to be reflected in higher levels of labour productivity relative to the industry mean. Indeed, market share gain is accompanied by a growth in relative labour

³ In Table 1, the quartiles are calculated using all establishments, but the shares are calculated only for continuers.

productivity. If we divide continuing plants into two equal groups based on market share changes, we find that gainers' relative labour productivity is equal to that of decliners at the start of the period (Table 2). Initial productivity in the continuing group is, therefore, not a good predictor of subsequent market share performance. However, over the period, those gaining market share simultaneously manage to increase their relative productivity. By 1997, their relative productivity is 23% above that of the declining group. By the end of the period, the market has rewarded those who have managed to improve their efficiency or the quality of their product and concomitantly their labour productivity with an increase in market share.

Table 2: Mean Relative Labour Productivity for High-Market-Share Gainers/Losers and Low-Market-Share Gainers/Losers

MARKET SHARE CHANGE (1988 TO 1997)	RELATIVE LABOUR PRODUCTIVITY (RLP)		• RLP
	1988	1997	1988 TO 1997
Two category scheme			
• Low gainers/losers (median and below change)	1.002	0.867	-0.135
• High gainers (above median change)	0.998	1.078	0.080

The amount of change in relative labour productivity can be investigated using the same technique that was applied to market-share changes. Labour productivity is defined as total value added divided by total employment. It is calculated for each plant relative to its industry's labour productivity. Changes in relative labour productivity will occur as a plant becomes more efficient or if it increases its use of capital and other inputs relative to other plants in the industry.

The transition matrix for the relative labour productivity of continuing plants between the years 1988 and 1997 is provided in Table 3. Ranking establishments according to their relative labour productivity in each of 1988 and 1997, and assigning them to quartiles in each of the two years, the transition matrix provides the percentage of establishments that had bettered their relative position, stayed the same, or even worsened it. Relative labour productivity is calculated for the 4-digit industry in which it is located for both years.

Table 3: Relative Labour Productivity Transition Matrix for Continuers (1988-1997)

RELATIVE LABOUR PRODUCTIVITY QUARTILES (1988)	RELATIVE LABOUR PRODUCTIVITY QUARTILES (1997)			
	Q1	Q2	Q3	Q4
	percentage of establishments			
Q1	49	23	18	10
Q2	28	33	24	15
Q3	15	29	31	25
Q4	9	12	28	51

As evidenced by Table 3, there is a large amount of shifting of relative position. For continuers, 51% of plants shifted up from the lowest quintile and 49% shifted downward out of the top quintile. Half of the plants initially in the top and bottom quartiles remain there by the end of the period. For those in the middle two quartiles, the movement is even greater, with only a third still in the same quartile in which they started.

While the preceding discussion has focused on the continuing population of establishments, the role that entrants and exits play should not be ignored. We find that new establishments are roughly equally distributed across relative productivity quartiles by the end of the period, although to a slightly lesser extent for the highest quartile (Figure 1). A similar, although less pronounced, pattern emerges when market share is considered. More than 40% of establishments born in the 1988-1997 period, and that are still alive by the end of the period, are in the top two quartiles by 1997. In fact, 17% of entrants actually find themselves in the highest quartile group. In other words, surviving entrants, when examined over a ten-year period, do not remain at the bottom end of the size distribution.⁴

Exits of the 1988 population that disappear by 1997 also come from all quartiles of the 1988 size distribution (Figure 2), though the smallest are most likely to exit. The percentage of each 1988 market share quartile that exit by 1997 varies from over 63% in the quartile with the smallest establishments to over 34% for the plants in the largest quartile. Exiting plants are slightly more likely to be found in the quartile that is less productive. Some 55% of establishments in the lowest productivity quartile had exited compared to 38% of those in the highest quartile.

3. Success, Innovation and Advanced Technology Use

There are many factors behind the growth of firms and plants—from overall management capabilities, to marketing, human resources, and operational capabilities. Elsewhere, we have investigated the importance of the relative importance of the many factors behind the growth and decline of firms using three different surveys.

The first study examines small and medium-sized firms (Baldwin, Chandler et al., 1994). The second investigates the factors behind the growth of new entrants (Johnson, Baldwin and Hinchley, 1997). The third explores the connection between the advanced technologies used by plants in 1989 and their growth (Baldwin, Diverty and Sabourin, 1995).

While growing firms have to do many things better in order to succeed, there is one factor that appears to discriminate best between the more-successful and the less-successful. Innovation is consistently a factor associated with successful growing firms (Baldwin, 1997; Baldwin and Johnson, 1998).

⁴ For additional Canadian evidence on the importance of entrants in this process, see Baldwin and Gorecki (1991), Baldwin (1995, chapter 9), Baldwin (1996a).

Figure 1:
Productivity and Market Share Distributions for Entrants

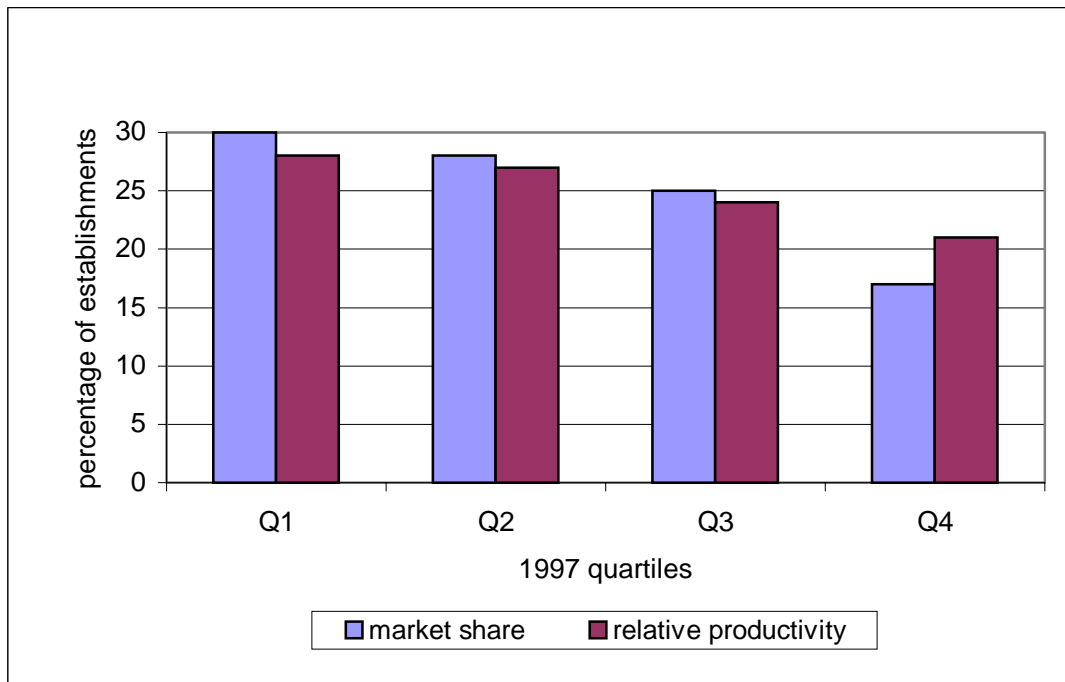
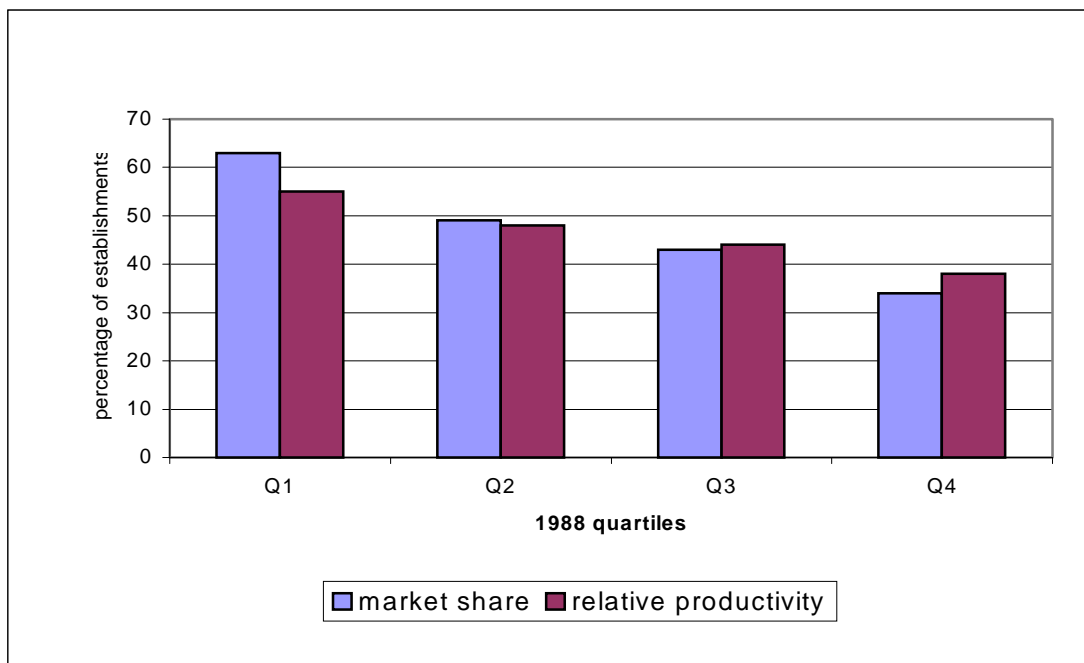


Figure 2:
Productivity and Market Share Distributions for Exits



Using the Survey of Growing Small and Medium Sized Enterprises (GSMEs) and a measure of firm performance that is defined as an average of the growth in market share,

labour productivity and profitability of a firm relative to other firms in an industry, we divide the generally successful population (all firms in the study had positive growth over a five-year period) into the more-successful and the less-successful group of firms and compare the characteristics of each. The key factor that distinguished the two groups was the degree of innovation taking place in a firm (Baldwin, 1996b). The more-successful firms tended to place greater emphasis on R&D capability and R&D spending. They were more likely to give greater importance to developing new technology. In the production area, they gave more significance to using new materials, and implementing aggressive new strategies like process control and just-in-time inventory control. Differences in the emphasis that the two groups gave to R&D strategies were accompanied by differences in the intensity of R&D activities. More-successful firms were more likely to have an R&D unit. They were more likely to use R&D tax credits. They were also more likely to report that they used patents to protect their innovations.

The *Survey of Operating and Financial Practices* of entrants (Johnson, Baldwin and Hinchley, 1997) provides an overview of the competencies developed by new firms that survive into their teen years. It too is linked to data on sales and financial structure that provide measures of performance for each survivor. As was found in the case of the study of growing small and medium-sized enterprises, success is closely related to innovation. Faster growing entrants are twice as likely to report an innovation. Faster growing entrants are more likely to invest in R&D and technology. They are also more likely to introducing new products. They are more likely to be targeting new foreign markets (Baldwin and Johnson, 1999). But faster growing firms are also more likely to be giving more emphasis to training, recruiting skilled employees and providing incentive compensation programs (Baldwin, 2000).

The findings of the GSME and the New Entrants survey, using evidence on the emphasis that firms gave to innovative strategies and activities, are confirmed by another study that uses data at the plant level on the use of advanced technologies. The 1989 *Survey of Advanced Technology* outlines the extent to which plants in the manufacturing sector use advanced technologies in different functional areas that each firm must master—in fabrication and assembly, inspection and communications, integration and control, and design and engineering. Data from this survey on 1989 technology use are linked to the performance of plants during the 1980s. Performance is measured using information on a plant's sales, labour productivity and wage rates. Advanced technology using plants are then compared to plants not using advanced technologies in order to study whether the market share, the productivity and the wage rate were growing relatively faster in the former group (Baldwin, Diverty and Sabourin, 1995).

Advanced technology-using plants are generally found to have increased their market share relative to plants that were not using advanced technologies. Growth in market share is higher for users of advanced technologies in the fabrication and assembly area than for most of the other functional areas. It is also relatively high for plants that are complex technology users, that is, for plants that combine advanced technologies from several of the functional groups (design, fabrication, communications, and integration and control).

Plants that managed to successfully incorporate advanced technologies into their production process by 1989 also saw their labour productivity increase relative to non-technology users during the previous decade when the adoption of new advanced technologies was occurring. Those that integrated advanced technologies from several areas experienced the largest productivity growth rates. Accompanying this increase in relative labour productivity was a growth in the relative wage paid to production workers.

In summary, all three studies have found that firms that managed to grow more quickly also *developed* certain innovative competencies that distinguished them from firms that grew less quickly. Differences in technological competencies had the same effect. That innovative and technological competencies are linked is not surprising. Some 53% of respondents to the 1993 Survey of Innovation and Advanced Technologies who had indicated that they introduced the advanced technologies did so in conjunction with the introduction of a product or process innovation.

Studies for other countries also indicate a relationship between advanced technology use and firm performance (Stoneman and Kwon, 1996; Rischel and Burns, 1997; Ten Raa and Wolff, 1999; Van Meijl, 1995).

In order to investigate whether the same type of relationship, between market performance and advanced technology use, existed in Canada during the 1990s, we will examine the connection between the growth of plant market share, growth in productivity and advanced technology use in this period. Growth is defined as the change in market share over the period 1988 to 1997—a period of ten years prior to the survey date of 1998. In order to correct for industry effects, growth was defined in terms of market share, as calculated at the 4-digit 1980 SIC industry level. Similarly, plant productivity is calculated relative to its 4-digit industry average. Productivity is defined as labour productivity⁵ and will be affected by both changes in capital intensity and technological advances.

In what follows, we compare the performance of plants throughout the nineties to their technological profile at the end of the period. We have seen that differences in the productivity performance of growers and decliners do not exist at the beginning of the study period but emerge over the period studied. This accords with a world in which firms experiment with alternate advanced technologies and the market rewards those who have chosen the correct technologies and managed to get them to work in the appropriate fashion. At the end of any period, productivity differences are evident between those who have managed to gain market share and those losing market share. For this reason, this study also examines the differences in advanced technology use at the end of the period and the changes that have occurred in market share and changes in relative labour productivity over the previous time period.

⁵ Defined as census total value added for manufacturing operations divided by total employment of both salaried and production workers.

As indicated, this procedure will show whether advanced technology use improves performance if the world is one in which alternate technology choices are made by different firms and the winners are then revealed slowly over a period of time. It presumes that marginal changes in technology mix are not as important as overall use patterns—whether firms use at least one advanced technology or a large number as opposed to a small number of advanced technologies. It is, of course, also likely that changes in advanced technology use at the margin matter—though to ascertain how important the latter are, we need a longitudinal database that compares changes of advanced technology use over time. The latter is the subject of another study.

In this paper, we experimented with performance measures calculated over two different periods of time. The first covered a seven-year span from 1990-1997. The second covered the ten-year span 1988 to 1997. Both yielded qualitatively the same results—but the results were more significant over the longer time period and are reported here. This bolsters our trust in the hypothesis that change occurs slowly—that the effects of using new advanced technologies does not emerge immediately. Lags in the effect of new advanced technologies exist because new machines have to be integrated into the production process. New techniques and business practices are often required if the new advanced technologies are to be more successful. For example, concurrent engineering practices are needed if design and engineering advanced technologies are to be used successfully in plants.⁶ Introducing advanced business practices involves organizational changes and takes time to implement.

4. Data Source for Advanced Technology Use

We focus in this paper on the adoption of a set of advanced technologies that are based on microelectronic computer technology. Computer-based technologies have penetrated all parts of the production process. Computer aided design and engineering is used in the early stages. Computer controlled machines are part of the fabrication and assembly process. Computers aid the communications and inspection process. They are a key part of the materials collection process. They aid in materials planning. While computers have stimulated the development of individual components, they are also key to integration and control of the various parts of the manufacturing process.

Computer-controlled equipment produces goods quickly without sacrificing quality, and offers a wide choice of products, produced exactly when needed. By using computer-based technologies, manufactures can respond quickly to changes in consumer preferences.

The effect of computers does not arise just from the ubiquitous stand-alone desktop. It is true that certain aspects of design and engineering depend on the stand-alone computer—but software is equally important here. Moreover, chips and computers are being increasingly imbedded into machines. Just as the electric motor moved from being a separate appendage located beside machines to being included in the machine, computers

⁶ The relationship between these practices and technology has been explored more fully in a recent study of technology use in the food-processing sector (Baldwin, Sabourin and West, 1999).

are now also an integral part of machinery such as robots and flexible manufacturing systems.

In this study, we make use of the results of the 1998 Survey of Advanced Technology in Canadian Manufacturing conducted by Statistics Canada to measure the extent to which these new advanced computer-based technologies have been integrated into the production process. The survey is based on a frame of Canadian manufacturing establishments drawn from Statistics Canada's Business Register. The sample was randomly drawn from a manufacturing establishment population that was stratified by industry and size. Excluded from the target population were food processing establishments and plants with fewer than 10 employees (Sabourin and Beckstead, 1999). The overall response rate to the survey was 98%.

In addition to technology adoption questions, the survey asked respondents questions about general firm and establishment characteristics, research and development, use of advanced business practices, skill requirements, as well as questions about the benefits and obstacles to adoption.

Twenty-six advanced technologies were listed on the survey—technologies that are applied in a wide range of functional areas. These range from computer-aided design that is used in design and engineering, to robots that are used in fabrication and assembly, to computer networks that are used as part of the communications and control function. For the purposes of this study, the advanced technologies are aggregated into three information and communication technology (ICT) groups—(i) software, (ii) network communications, and (iii) hardware technologies. In our earlier study (Baldwin, Diverty and Sabourin, 1996), we found that plants using communications technologies did particularly well over the 1980s. In a recent study, Ten Raa and Wolff (1999) also found a positive relationship between ICT use and productivity growth. Van Meijl (1995) argues that this is mostly due to externalities associated with ICT adoption.

Eight advanced technologies belong to the software group—computer-aided design and engineering (CAD/CAE); CAD output to control manufacturing machines (CAD/CAM); modelling or simulation technologies; manufacturing resource planning (MRP); computer integrated manufacturing; supervisory control and data acquisition (SCADA); use of inspection data for manufacturing control; and knowledge-based software.

Five advanced technologies belong to the network communications group—electronic exchange of CAD files; local area network (LAN) for engineering or production; company-wide computer networks; inter-company computer networks; and digital, remote controlled process plant control.

There are ten advanced technologies in the hardware class—flexible manufacturing systems; programmable logic controllers; robots with and without sensing capabilities; rapid prototyping systems; part identification for manufacturing automation; automated

Table 4:
Adoption of Advanced Information and Communications Technologies (ICT), 1998
(percentage of establishments using the technology)

ICT TECHNOLOGY	SPECIFIC TECHNOLOGY	IN USE ⁷	STANDARD ERROR
SOFTWARE	Any	65	1.3
	Computer-aided design and engineering (CAD/CAE)	44	1.4
	CAD output to control manufacturing machines (CAD/CAM)	36	1.4
	Modelling or simulation technologies	17	1.1
	Manufacturing Resource Planning (MRP)	21	1.0
	Computer integrated manufacturing	18	1.1
	Supervisory control and data acquisition (SCADA)	16	0.9
	Use of inspection data for manufacturing control	26	1.2
	Knowledge-based software	18	1.1
COMMUNICATIONS	Any	59	1.4
	Electronic exchange of CAD files	34	1.4
	Local area network (LAN) for engineering or production	36	1.3
	Company-wide computer networks	35	1.3
	Inter-company computer networks	29	1.2
	Digital, remote controlled process plant control	5	0.5
HARDWARE	Any	57	1.4
	Flexible manufacturing systems	15	1.0
	Programmable logic controllers	37	1.4
	Robots with sensing	8	0.7
	Robots without sensing	7	0.6
	Rapid prototyping systems	5	0.6
	Part identification for manufacturing automation	18	1.0
	Automated storage/retrieval system	5	0.6
	Automated vision-based inspection/testing systems	11	0.8
	Other inspection/testing automated sensor-based systems	13	0.9
	Computers used for control on the factory floor	31	1.3

storage/retrieval systems; automated vision-based systems used for inspection/testing; other automated sensor-based systems used for inspection/testing; and computers used for control on the factory floor.

⁷ Source of the data is Sabourin and Beckstead (1999).

Three of the twenty-six specific advanced technologies—lasers for materials processing; high speed machining; and near-net shaped technologies—have been excluded from the analysis.

The ICT groups, their constituent advanced technologies, and their adoption rates are provided in Table 4.

Similar rates of adoption are found for the three ICT groups. Sixty-five percent of manufacturing establishments use at least one of the eight software technologies listed on the survey; 59% use at least one of the five network communications technologies; while 57% use at least one of the 10 hardware-based technologies.

Computer-aided design technologies dominate the software category. Close to half the plants have adopted at least one computer-aided design and engineering technology (CAD/CAE), with about a third using at least one CAD/CAM machine.

Plants use a variety of network communications advanced technologies—local area networks, company-wide networks and inter-company networks. For those that do adopt network communications technologies, multi-use appears to be the norm as the adoption rate of at least one of the communications technologies is 59%.

The use of programmable logic controllers and factory control computers in the hardware group is reported most frequently.

Advanced technology use will be measured in several different ways in this study. We use: (i) incidence of use (the use of at least one advanced technology); (ii) intensity of use (the number of advanced technologies adopted); and (iii) measures of complexity of use (whether advanced technologies are being combined from more than one category). Plants adopt, on average, two advanced software technologies, and about one and a half network communications and hardware technologies each (Table 5).

Table 5:
Incidence and Intensity of Adoption of ICT Technologies (1998)
 (Standard Errors provided in brackets)

ICT ADVANCED TECHNOLOGY	IN USE	NUMBERS USED	NUMBER OF TECHNOLOGIES IN GROUP
	(% of establishments)	(number of technologies)	
Software	65 (1.3)	1.97 (0.05)	8
Hardware	57 (1.4)	1.49 (0.05)	10
Communications	59 (1.4)	1.40 (0.04)	5
All	76 (1.2)	4.85 (0.12)	23

5. PERFORMANCE AND ICT USE

At issue is the extent to which plants that exhibit different levels of success are found to use advanced technologies more or less intensively. We approach this question first with bivariate analysis that compares different measures of performance to advanced technology use and then with multivariate analysis that regresses performance measures on advanced technology use and a number of other plant characteristics.

For both purposes, we relate performance over a period (1988-1997) to advanced technology use at the end of the period (1998).

$$1) \bullet RLP_{t-1,t} = f(\text{Tech}_t)$$

where $\bullet RLP_{t-1,t}$ is the change in a plant's performance measured in various dimensions (relative productivity, market share, employment share, relative wage rates, relative profitability) over the period $t-1$ to t and Tech_t is a measure of advanced technology use at the end of the period in year t .

Since advanced technology use at the end of the period is just the sum of advanced technology use at the beginning of the period Tech_{t-1} and the change in advanced technology use over the period, $\bullet \text{Tech}_{t-1,t}$, equation number 1 can be written as:

$$2) \bullet RLP_{t,t-1} = f(\text{Tech}_{t-1} + \bullet \text{Tech}_{t-1,t})^8$$

Economic performance is expected to be related to how technologically advanced an establishment is at the start of the period and changes in advanced technology use over the period.

Performance is posited to be a function of advanced technology use at the beginning of the period because there is a learning process involved with the introduction and use of advanced technology. Changes in labour productivity resulting from advanced technology adoption are, therefore, expected to occur slowly as plant managers learn how to use them in the most effective fashion. Since benefits or gains from the adoption of advanced are not realized immediately, there is a lagged effect of advanced technology use on performance.

In addition, we expect that increases in advanced technology use during the period will affect relative performance over the period. Technologies introduced early in the ten-year period or those with shorter adoption-to-benefits lags are hypothesized to also have an impact on productivity growth.

Relative labour productivity is calculated as total value added divided by total employment for the establishment divided by the same measure calculated at the 4-digit industry level. Growth in relative labour productivity is calculated as the difference

⁸ The estimated coefficient from such an equation will be a weighted average of the coefficients that are attached to each of Tech_{t-1} and $\bullet \text{Tech}_{t-1,t}$

between end-period relative labour productivity and start-period relative labour productivity.

Labour productivity is affected by many factors—by technical change in a plant, by its changing capital intensity, by organizational changes—all of which factor into a firm's success. Since all of these factors and, in particular, capital accumulation are associated with firm growth, we make use of this measure. While some might prefer to see a total factor rather than a labour productivity measure used because it is widely perceived to better measure technical progress, it should be noted that the two measures are closely related. When the production function approximates a Cobb-Douglas, growth in labour productivity is equal to multifactor productivity growth plus the growth in the capital/labour ratio times capital's share (See Baldwin, Beckstead et al., 2001). As a result, empirical studies often find similar results using the two measures (Salter, 1966). Moreover, measures of labour productivity are inherently more accurate than measures of total factor productivity.

Growth in market share is measured as the total shipments produced by an establishment relative to total shipments at the 4-digit industry level. Growth is measured as the difference between end- and start-period market shares.

Growth in relative profitability is calculated in a similar fashion, only that profitability at the establishment level is calculated as the value of shipments less wages and salaries divided by value of shipments.

Bivariate results of the relationship of economic performance and advanced technology adoption are provided in Table 6. Three separate measures of performance are used—growth in relative productivity (column I), growth in market share (column II) and growth in relative profitability (column III) over the period 1988-1997. In each case, establishments are divided into two equal sized groups, those with more and those with less growth than the median. Then the differences in advanced technology adoption of the group with the highest and the lowest growth are compared.

Establishments in the top half of the labour productivity growth distribution are found to be more likely to be using at least one advanced technology. This result extends across all ICTs as well--software, hardware and communications. In addition, the percentage that is using five or more advanced technologies and ten or more advanced technologies is higher for those with the fastest growth in labour productivity than for those whose growth places them in the bottom half.

**Table 6:
Relationship Between Performance Growth (1988-1997) and Advanced technology Adoption (1998)**

ADVANCED TECHNOLOGY ADOPTION	PERFORMANCE GROWTH ⁹ (1988-1997)					
	RELATIVE LABOUR PRODUCTIVITY (I)		MARKET SHARE (II)		RELATIVE PROFITABILITY (III)	
	low	high	low	high	low	high
	Percentage of establishments					
ICT use						
• Software	63	73	63	74	64	71
• Hardware	54	66	55	65	54	65
• Communications	58	69	57	71	59	68
• Any	75	83	74	85	75	83
Multiple use						
• 5 or more	42	55	40	58	43	53
• 10 or more	18	23	17	26	17	24
Combination use						
• software and hardware	46	59	46	59	47	58
• software and communications	50	63	51	64	52	61
• hardware and communications	43	56	44	55	44	55
• all three	39	54	40	53	41	52
	Number of advanced technologies adopted					
Numbers of ICT						
• Software	1.9	2.3	1.8	2.5	2.0	2.3
• Hardware	1.4	1.8	1.4	1.9	1.4	1.9
• Communications	1.4	1.7	1.4	1.8	1.4	1.7
• All	4.7	5.9	4.7	6.1	4.8	5.8

Note: All differences reported in this table are statistically significant at the 5% level. In fact, most are statistically significant at the 1% level.

Differences also exist between the fastest labour productivity growers in terms of combinations of advanced technologies used. The greatest differences are found for plants that use all three types of ICTs. A significantly higher proportion of fast productivity growers adopts all three types of ICTs than do slower growers—a difference of 15 percentage points.

⁹ Labour productivity is defined as total value added divided by total employees; profitability is defined as total shipments less materials less wages and salaries divided by total shipments—the price/cost margin.

Finally, there are differences in the intensity of advanced technology use. Establishments with the highest growth in labour productivity adopt, on average, 5.9 advanced technologies compared to 4.7 for low-growth plants. Similar differences are found across ICT groups.

We also examine how the productivity of advanced technology users relative to non-users has evolved over time using a classification that divides plants into users and non-users based on their status as of 1998. To do so, we calculate the ratio of the mean productivity of advanced technology users to the mean productivity of non-users of advanced technology in 1988 and 1997 and then plot this relationship in Figure 1.¹⁰ This is done for each of the technology groups—software, hardware, communications and then for four sets of combinations—software and hardware (C1), software and communications (C2), hardware and communications (C3) and all three (C4). Advanced technology users have increased their productivity advantage over non-users across all technology measures, particularly when it involves the use of network communications technologies, both by itself and in combination with other types of advanced technologies. The largest rates of increase in relative productivity occur in the network communications group; in hardware and communications; and in the use of all three ICTs. This replicates the findings of our earlier study (Baldwin, Diverty and Sabourin, 1995), which reports that the greatest gains in relative productivity in the 1980s to occur in plants that adopted advanced communications technologies, either singly or in combination with other ICTs.

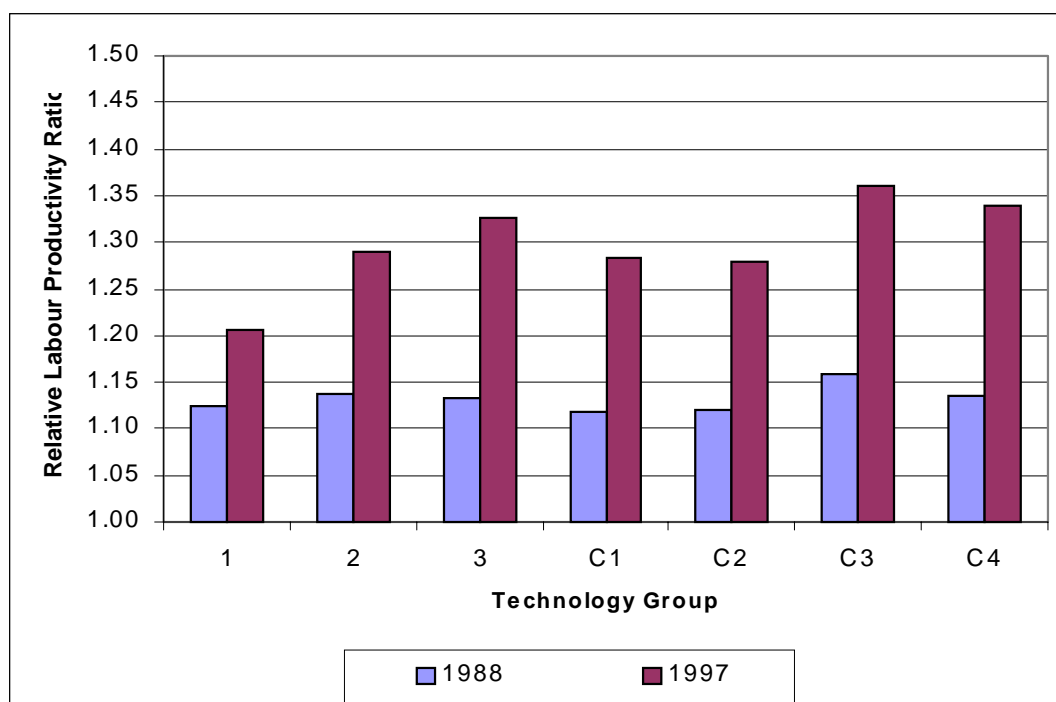
When plants are divided at the median on the basis of profitability growth (defined as the growth in the price-cost margin)¹¹ over the 1988-1997 period, we also find significant differences in the incidence of advanced technology use, the numbers of technologies used and the extent to which advanced technologies from software, hardware and communications are used jointly (Table 6, column III). Plants with the highest growth in profitability adopt, on average, 20% more advanced technologies than do low-growth plants. High-profitability-growth plants adopt, on average, 5.8 advanced technologies compared to 4.8 for low-growth plants. These differences extend to incidence of use as well, with hardware and network communications technologies exhibiting the greatest differences.

When growth in market share is used to divide the sample into two parts, similar results are found. The plants that experienced the highest market-share growth also tend to be more likely to adopt more advanced technologies from each of the groups.

¹⁰ The ratio is calculated as the sum of value-added of all plants that are technology users divided by the sum of employment in a class divided by the same ratio for non-technology users.

¹¹ Profitability is defined as value of shipments less wages and salaries less materials divided by value of shipments.

Figure 3:
Relative Productivity of Advanced Technology Users and Non-Users: 1988 vs. 1997



<u>Group Number</u>	<u>Technology Group</u>	<u>Group Number</u>	<u>Technology Group</u>
1	Software	C1	Software and hardware
2	Hardware	C2	Software and communications
3	Communications	C3	Hardware and communications
		C4	Software, hardware and communications

6. DIFFERENCES AT THE INDUSTRY LEVEL

Growth in productivity varies by industry (Baldwin, Beckstead et al., 2001). In order to examine whether the differences that were presented in Table 6 at the national level also pertain to most individual industries, we repeat the bivariate tabulations in Table 7 at the 2-digit industry level. Establishments are divided into those with low growth in relative productivity and those with high growth in relative productivity on an industry-by-industry basis using the median value as the dividing point. Productivity growth is calculated as the difference between the end-year relative productivity and the start-year relative productivity of the establishment.

Table 7: Growth in Relative Labour Productivity (RLP) by Industry (1988-1997) and Advanced Technology Use (1998)

INDUSTRY	SOFTWARE		HARDWARE		COMMUNICATION		ANY ADVANCED TECHNOLOGY		FIVE OR MORE TECHNOLOGIES	
	LOW • RLP	HIGH • RLP	LOW • RLP	HIGH • RLP	LOW • RLP	HIGH • RLP	LOW • RLP	HIGH • RLP	LOW • RLP	HIGH • RLP
	(percentage of establishments)									
• Chemicals & Petroleum	60	68	60**	75**	65**	80**	79	86	42***	63***
• Electrical & Electronics	91*	80*	75	64	84	83	91	85	68	74
• Fabricated Metals	75*	91*	51**	75**	64	80	84	95	48	68
• Furniture	44	59	30**	69**	42	53	44	71	22*	49*
• Industrial Machinery	67	88	61	74	69	82	76	88	51	70
• Non-Metallic Minerals	64**	42**	67	52	52	38	75	59	51**	30**
• Other	65	61	47	50	58	51	71	75	38	35
• Paper	85	75	86	84	85	58	97	84	63	59
• Primary metals	59	87	49**	88**	59	87	59	88	58	70
• Printing & Publishing	44*	63*	29**	51**	61	75	65**	84**	20***	44***
• Rubber & Plastics	57**	80**	61	78	58*	80*	72**	94**	40*	62*
• Textiles	47**	66**	50	52	37***	61***	60*	75*	29**	46**
• Transportation	76	80	67	68	68	74	82	81	58	71
• Wood	56	55	63	58	38	52	79	76	35	31
• ALL	63***	73***	54***	66***	58***	69***	75***	83***	42***	55***

Note: *** means that differences are statistically significant at the 1% level; ** significant at the 5% level; and * significant at the 10% level.

Table 8: Growth in Market Share (MS) by Industry (1988-1997) and Advanced Technology Use (1998)

INDUSTRY	SOFTWARE		HARDWARE		COMMUNICATION		ANY ADVANCED TECHNOLOGY		FIVE OR MORE TECHNOLOGIES	
	LOW • MS	HIGH • MS	LOW • MS	HIGH • MS	LOW • MS	HIGH • MS	LOW • MS	HIGH • MS	LOW • MS	HIGH • MS
	(percentage of establishments)									
• Chemicals & Petroleum	60	69	61**	74**	67*	79*	79	87	45**	59**
• Electrical & Electronics	87	83	63*	80*	85	82	89	87	70	73
• Fabricated Metals	76	90	54	68	58***	88***	84	95	39***	79***
• Furniture	50	48	42	49	46	45	56	49	28	40
• Industrial Machinery	69**	94**	58*	83*	71	83	75*	94*	48***	83***
• Non-Metallic Minerals	52	58	53	69	36*	57*	62	76	35	48
• Other	54**	75**	41	58	48	63	63**	86**	31	44
• Paper	85	76	100**	74**	77	66	100	82	77*	49*
• Primary metals	69*	94*	64**	95**	69*	94*	69*	95*	56**	94**
• Printing & Publishing	47	62	35	46	60**	80**	67**	85**	24**	44**
• Rubber & Plastics	72	61	71	66	64	70	82	80	46	52
• Textiles	49**	66**	47	57	37***	66***	60**	78**	29**	49**
• Transportation	73	85	64	73	69	74	76*	90*	61	69
• Wood	53	60	62	59	47	40	77	78	33	35
• ALL	63***	74***	55***	65***	57***	71***	74***	85***	40***	58***

Note: *** means that differences are statistically significant at the 1% level; ** significant at the 5% level; and * significant at the 10% level.

Table 7 contains the percentage of plants from each group that use a particular type of advanced technology. For example, in the primary metals industry, 49% of the low-growth plants had adopted at least one advanced hardware technology by 1997, compared to 88% of those in the high-growth category, a difference of close to 40 percentage points. The national relationship that was observed between advanced technology use and productivity growth in hardware is only significant in chemicals and petroleum, fabricated metals, furniture and fixtures, primary metals, and printing and publishing, though there are also relatively large positive differences in rubber and plastics and industrial machinery. When it comes to network communications technologies, a greater number of industries exhibit positive differences, but they are often not significant.

Substituting market-share growth for productivity growth, we find much stronger results in Table 8. With the exception of paper and rubber and plastics industries, higher market-share growth is associated with greater advanced technology adoption rates across all technology groups. Close to half of these differences are statistically significant. Differences are positive and have the highest significance for industrial machinery, 'other', and textiles for software technology; chemicals and petroleum, and primary metals for hardware technology; fabricated metals, printing and publishing, and textiles for communication technology. Only in the paper industry are low gains in market share associated with higher adoption rates. This may simply indicate that the advanced technologies chosen for 1998 Advanced Technology Survey are less applicable to this industry.¹² Use of five or more advanced technologies is associated with significant differences in seven industries—chemicals and petroleum, fabricated metals, industrial machinery, paper, primary metals, printing and publishing, and textiles.

7. MULTIVARIATE ANALYSIS

7.1 MODEL

In this section, we use a multivariate framework to examine the connection between advanced technology use and several measures of market performance of plants in the manufacturing sector. The performance measures are the growth in relative productivity, the relative average wage rate, relative profitability as well as the growth in market and employment share.

There are two main components to the model—an equation that estimates the correlates of productivity growth and one that examines the correlates of market-share growth. The first equation models relative productivity growth during the 1988-1997 period:

3) Productivity growth = f (advanced technology use, growth in capital intensity, plant size, nationality, initial period productivity, profitability change, R&D performance, and region).

¹² A special survey (see Baldwin, Sabourin, and West, 1999) was conducted in the food processing sector after it was found that the 1989 generic advanced technology survey needed to be expanded to take into account the special circumstances of the food processing sector.

Relative productivity growth is postulated to be a function of advanced technology use at the end of the period. As already explained, end-period advanced technology use is taken as an indicator of the plant's ability to have learned how to work with innovative technological processes. We have captured advanced technology use with a number of mutually exclusive, increasingly comprehensive and, therefore, sophisticated technology variables. Use of one type, and only one type, of the three information and communication advanced technologies--software, hardware and communications--is captured by a set of three binary technology variables. Four other variables capture the use of combinations of ICTs--software and hardware; software and communications; hardware and communications; and the most sophisticated of all, the use of all three types. Alternate results using number of technologies are reported in Appendix B.

Previous work (Baldwin, Diverty and Sabourin, 1995) found that, in 1989, just the use of a one particular technological group (fabrication, design and engineering, or communications) was sufficient to differentiate plants one from another in terms of performance—but also found that the plants that were combining new advanced technologies from different areas were characterized by the best performance. Since we are measuring advanced technology use 10 years later in 1998 and, by the latter year, many more plants had adopted at least one advanced technology, we expect the single technology use variables to have less effect on plant performance in the 1990s. But we hypothesize that those plants combining advanced technologies from a number of different areas will exhibit the fastest productivity growth over the 1990s.

Productivity growth is also likely to be a function of advanced technology use to the extent that advanced technology use is associated with higher capital intensity. To correct for this, the increase in a plant's relative profitability is also included—since measures of profitability should be closely correlated with capital intensity on average.

Plant size was included to capture the greater financial and informational capabilities often associated with larger establishment size. Large plants tend to invest more in new equipment and capital, which tends to lead to growth. Employment data were used to capture size effects.

Initial period productivity is included to allow for regression-to-the-mean. Previous work (Baldwin, 1995) and the tables presented in the first section of this paper have reported that plants tend to regress to the mean over the period.

Nationality of ownership of a plant is included since multinational firms are seen to play an important role in the global diffusion of advanced technologies (Caves, 1982). Previous work has found that labour productivity growth in foreign controlled plants has been greater than in the domestic sector (Baldwin and Dhaliwal, 2001). The advantages of multinational enterprises are typically related to their size, expertise and financial resources. Nationality of control is captured, in this study, by a binary variable that takes a value of one if the establishment is foreign controlled, and a value of zero if the establishment is domestically controlled.

A binary variable that measures whether the plant reported that it performed R&D is also included. This is done for two reasons. First, we want to know whether R&D activity affected performance. Secondly, the inclusion of this variable is meant to handle the fixed effects econometric problem. The econometrics literature has spent considerable effort worrying that equations like equation 2 will yield biased estimates of the parameters attached to the independent variables if there are fixed effects omitted that are correlated with the included variables. Much of our previous work on the characteristics of firms suggests that this is likely to be a problem. Basically, firms divide into those who are innovative and stress a large number of functional areas, such as human resources or marketing capabilities (Baldwin and Johnson, 1996, 1998, 1999) and those who do not. Since advanced technology use is likely to be highly correlated with the plant's degree of innovativeness, a regression that only employs advanced technology use will risk attributing the effect of a large number of activities to just advanced technology use.

In order to address this problem, we include three different variables that capture whether a plant is more innovative. The first innovativeness variable captures whether R&D is conducted either in that plant or in an associated plant on an ongoing basis. Previous work demonstrates that firms that conduct R&D on an ongoing as opposed to an occasional basis are more likely to be innovative (Baldwin and Hanel, 2002).

The second is a variable that measures the importance given to a number of strategies that capture aspects of innovation that are different from a plant's R&D focus. On the technology survey, plant managers rated the importance of 'developing new products, entering new markets, using new materials, giving ongoing technical training, and using teams' on a five-point Likert scale from 1 for low importance to 5 for high importance. Variants of these questions have been used previously in the GSME survey and the Survey of Operating and Financial Practices to distinguish between more and less innovative firms.¹³ The questions used here capture this phenomenon directly with the question on new products but also do so indirectly via an examination of human resource strategies. Innovation and a training strategy are closely related (Baldwin, 1999). Focusing on new materials is a type of innovation. Placing a stress on new markets is an essential part of an innovation strategy. The variable included in the estimated equation is the average of the response to the five survey questions listed above.

The third variable measures the uniqueness of the firm by the emphasis that it gives to a set of advanced business practices that were found elsewhere to be closely associated with the adoption of advanced technologies (Baldwin, Sabourin, and West, 1999). These practices include "cross-functional design teams, concurrent engineering, continuous improvement (i.e., TQM), benchmarking, plant certification (i.e., ISO 9000), certification of suppliers, just-in-time inventory control, statistical process control, electronic work order management, process simulation, distribution resource planning and quality function deployment". Many of these practices are required to get the best use out of advanced technologies. For example, concurrent engineering complements CAD systems and enables plants to better exploit the capabilities of these new technologies. Use of these practices then allows us to distinguish between those plants that are better managed

¹³ See Baldwin, Chandler et al. (1994) and Johnson, Baldwin and Hinchley (1997).

and those that are not. For the statistical analysis, we make use of a variable that measures the number of these practices that are in use in any particular plant.

In addition, binary variables were included to test whether there were any regional effects. With this variable, we are testing to see whether the geographic environment matters.

The second equation examines the correlates of growth in market share.

4) Market-share growth = f (relative labour productivity in the initial year, relative labour productivity growth over the period, advanced technology use, plant size, nationality, R&D performance, and region).

Growth in market share is postulated to depend on factors that give a firm an advantage. Growth in market share is posited to be a function of both the advantage in labour productivity experienced at the beginning of the period and its growth over the period. In our formulation, growth in relative labour productivity is a proxy for a host of factors that are related to technical efficiency, changes in capital intensity, and other competencies in a firm—from management capabilities to human resource strategies such as training.

Although we already have included advanced technology use in the labour-productivity equation, we also include advanced technology use in the market-share equation to test whether there is an effect of advanced technology on market-share growth that is separate from its effect on the growth in relative labour productivity. Advanced technology use not only allows relative cost gains that are reflected in lower prices, but it also improves the flexibility in the production process and the quality of products produced (Baldwin, Sabourin and Rafiquzzaman, 1995; Baldwin, Sabourin, and West, 1999). As such, it might be expected to have an independent effect on growth in market share in addition to its effect on measured labour productivity .

The other variables were essentially the same as were used in the growth in the relative productivity model, except that we included opening-period market share so as to allow for regression-to-the-mean. Baldwin (1995) outlines the inexorable changes that have occurred in the Canadian manufacturing sector in the 1970s in most industries as small plants gained market share and large plants lost market share. The data in Table 3 demonstrate that the same process was taking place during the late 1980s and early 1990s.

An OLS regression model was used to estimate each of equations 3 and 4. The regressions that were estimated were:

$$\begin{aligned} 5) \text{ PRODGRTH} = & \alpha_0 + \alpha_1 * \text{TECH} + \alpha_2 * \text{SIZE8} + \alpha_3 * \text{FOREIGN} + \alpha_4 * \Delta \text{CAPINT} \\ & + \alpha_5 * \text{LABPROD88} + \alpha_6 * \text{R\&D} + \alpha_7 * \text{INNOV} + \alpha_8 * \text{BUS} + \\ & \alpha_9 * \text{REGION} \end{aligned}$$

$$\begin{aligned}
6) \text{ SHARGRTH} = & \beta_0 + \beta_1 * \text{TECH} + \beta_2 * \text{SIZE88} + \beta_3 * \text{FOREIGN} + \beta_4 * \Delta \text{CAPINT} \\
& + \beta_5 * \text{LABPROD88} + \beta_5 * \Delta \text{LABPROD} + \beta_5 * \text{MKTSHR88} \\
& + \beta_6 * \text{R\&D} + \beta_7 * \text{INNOV} + \beta_8 * \text{BUS} + \beta_9 * \text{REGION}
\end{aligned}$$

where *PRODGRTH* measures the growth in relative labour productivity of a plant.

SHARGRTH measures the growth in market share of a plant.

TECH measures the use of advanced technologies by the establishment.

SIZE88 measures opening-period employment size of the plant.

FOREIGN captures whether or not an establishment is foreign owned.

ΔCAPINT captures the capital intensity of a plant through changes in profitability.

LABPROD88 measures opening-period labour productivity levels.

$\Delta \text{LABPROD}$ measures changes in relative labour productivity over time.

MKTSHR88 measures opening-period market share.

R&D captures whether or not an establishment is an R&D performer.

INNOV captures various aspects of innovation in a plant.

BUS captures the extent to which advanced business practices exist in a plant.

REGION captures any regional effects.

We also estimate three additional models—one examining the correlates of growth in the relative average wage rate over time; another investigating the correlates of relative firm profitability growth; and a third one examining the correlates of growth in employment share over time. These three variables—the relative wage rate, employment share and relative profitability—jointly determine value added at the plant level.¹⁴ Our purpose in investigating the relationship between advanced technology use and each of these variables is to determine whether advanced technology use has more of an influence on one than another.

Much the same independent variables are used in these models as in the productivity growth model. In each case, we examine whether advanced technology use was related to the dependent variable. In each case, we also ask whether there was regression-to-the-mean in the dependent variable over time.

The average wage rate of a plant is measured relative to the industry wage rate. It is calculated as the ratio of wages and salaries to total employment for the establishment divided by the same for the 4-digit industry. Growth of the relative wage rate is then calculated as the difference between the end- and start-year relative wage rates. Relative profitability growth is calculated in a similar fashion, only that profitability at the establishment level is calculated as the value of shipments less wages and salaries divided by value of shipments—a type of price-cost margin. Employment share of an establishment is also calculated relative to the industry of that establishment. Growth in employment share, like the other performance measures, is calculated as the difference between the end-period employment share and the beginning-period employment share.

¹⁴ Value added is equal to $wL + rK$ where w is the wage rate, L is employment, r is the profit rate and K is capital.

7.2 EMPIRICAL RESULTS

The results of the OLS regression that models several different measures of market performance as a function of advanced technology use are presented in Table 9. Since the data are taken from a survey that randomly sampled the population, weighted estimates are provided. All regressions are estimated against an excluded plant that is Canadian-owned, does not perform R&D, and is in the Atlantic region.

Growth in relative labour productivity is positively and significantly related to advanced technology use (column 1, Table 9). Plants that have managed to adopt advanced technology by the end of the period have higher productivity growth over the period than those that did not. But it is a particular type of technology use that is associated with the growth in relative labour productivity. Establishments that had adopted only network communications technology were significantly more likely to have higher productivity growth than those that did not. But the real gains came from the joint adoption of all three types of technology--software, hardware, and network communications. These results are significant at the 1% level. Regressions were also run (but not reported here) using numbers of advanced technologies adopted, instead of incidence of adoption, as the independent variables. Similar results were found. Plants that made greater use of advanced technologies in the late 1990s experienced relatively faster productivity growth during the previous decade. This relationship is particularly strong for plants that adopted network communications technologies.

The coefficient attached to plant size is also positive and significant. Being large at the outset, even after controlling for ownership, advanced technology use and initial labour productivity, has a significant effect on productivity growth. The difference in productivity growth between large and small plants in Canada during the early 1990s accords with previous studies dealing with the 1970s and 1980s (Baldwin, 1998; Baldwin and Dhaliwal, 2001).

Foreign control has a positive and highly significant effect on growth in labour productivity. Significantly higher growth in labour productivity is found to be associated with foreign-controlled establishments.

The coefficient on the starting period productivity variable is negative and highly significant. This implies that there is regression-to-the-mean in relative productivity. Plants that started the period with a high relative labour productivity saw their relative labour productivity decline. Or, equivalently those plants that were below average in terms of relative labour productivity at the start of the period saw their productivity increase relative to their compatriots.

There is a large, significant effect of the growth in capital intensity on the growth in relative labour productivity. Because there is some overlap in the definitions of labour productivity and profitability, we remove this variable from the estimation to see whether doing so affects the estimated parameters associated with the advanced technology variables (Table 9, column 2). It does not.

**Table 9: OLS Regressions
Performance Growth from 1988 to 1997 as a Function of Advanced Technology Use
in 1998 (establishment weighted)**

	• RELATIVE PRODUCTIVITY		• MARKET SHARE	
	Column 1	Column 2	Column 3	Column 4
Intercept	0.270***	.394***	-0.002	-0.0003
Advanced technology Use				
Software Only	-0.006	-0.015	-0.0003	-0.0001
Hardware Only	-0.013	0.045	0.004	0.004
Network Communications Only	0.144*	0.165*	0.002	0.003
Software + Hardware Only	0.018	-0.030	-0.001	-0.001
Software + Communications Only	0.021	0.017	0.0004	0.001
Hardware + Communications Only	0.022	0.091	-0.0009	-0.0004
All three	0.098**	0.169***	0.0004	0.0008
Business Practices				
Practices	0.002	-0.001	9e-5	0.0001
Plant Size				
Employment Size-1988	3e-5	4e-5	-4e-6	-4e-6
Nationality of Control				
Foreign	0.296***	0.398***	0.003	0.003**
Capital Intensity				
Profitability change 1988-1997	1.410***	---	-0.003	-0.003
Initial Labour Productivity				
Relative Labour Productivity – 1988	-0.442***	-.616***	0.002**	---
Labour Productivity Growth				
Relative Labour Productivity Growth	---	---	0.005***	0.004***
Initial				
Market Share – 1988	---	---	-0.035	-0.029
Profitability-1988	---	---	---	---
R&D				
Ongoing R&D performer	-0.035	-0.017	0.002**	0.002*
Business Strategy				
Firm's business strategy	0.003	0.003	0.0001*	0.0001*
Region				
Quebec	-0.076	-0.078	-0.0005	-0.0005
Ontario	-0.034	-0.066	-0.001	-0.001
Prairies	-0.113*	-0.133	0.0002	0.0002
British Columbia	-0.069	-0.122	-0.001	-0.0008
Summary Statistics				
N	2362	2367	2362	2362
F(degrees of freedom)	(18, 2343) 18.94	(17, 2349) 12.81	(20, 2341) 4.30	(19, 2342) 4.65
R ²	0.52	0.33	0.03	0.03

*** statistically significant at the 1% level; ** at the 5% level; * at the 10% level.

Neither R&D performance, nor the other variables (business strategy and business practices) are significant determinants of a plant's relative productivity growth. This suggests that the fixed effects that are related to some firms being better than others is not affecting the importance of technology as a significant determinant of productivity growth.

Finally, regional location does not have a consistently significant effect on labour productivity growth—though it should be noted that the omitted region (the Atlantic Provinces) has a consistently superior performance to the other regions. This is consistent with a regression-to-the-mean effect, since this region lagged behind the others in terms of advanced technology use in 1989 (Baldwin and Diverty, 1995).¹⁵

The results for growth in market share, found in the third and fourth columns of Table 9, indicate that labour productivity at the start of the period and growth in relative labour productivity over the period are both positive and highly significant factors contributing to market share growth.

But after the effects of relative productivity growth on market share are taken into account, growth in market share is not related to advanced technology use. It is related to whether a plant benefits from the performance of R&D and to whether a set of technology-related business strategies are being pursued. If these variables are removed, then the most sophisticated use of technology variable (the use of all three technologies) is significant. Establishments that adopt all three types of ICTs are significantly more likely to increase their market share but only when the other innovative variables are removed from the regression. When we remove labour productivity at the beginning of the period (because it may be strongly related to advanced technology use), we still find that comprehensive technology use is significant, but so too is the use of software and communications technologies by themselves. This accords with our earlier finding that communications technology use at the end of the 1980s was most closely associated with performance during that decade (Baldwin, Diverty, and Sabourin, 1995).

What conclusions can be drawn from this? We have found that some firms adopt a very different innovation profile than others do. They perform R&D; they stress a number of advanced management practices; *and* they are comprehensive advanced technology users. For this they are rewarded with growth in market share. Comprehensive technology use matters, but as part of a package of activities.

As with relative labour productivity, there is a regression-to-the-mean process at work in changes in market share. Plants that are larger in 1988 generally lost market share. However this result is not statistically significant. Foreign-controlled plants are gaining market share.

¹⁵ There were no differences in these equations across industries.

There are no significant regional effects. This result implies that there have been very few changes in the relative importance of plants within industries at the regional level—that the geographic distribution of employment has been relatively constant.¹⁶

Table 10: OLS Regressions
Performance Growth from 1988 to 1997 as a Function of Advanced Technology Use in 1998 (establishment weighted)

	• RELATIVE WAGE RATE	• RELATIVE PROFITABILITY	• EMPLOYMENT SHARE
Intercept	0.545***	0.543***	0.0008
Advanced technology Use			
Software Only	0.0002	0.139	-0.0002
Hardware Only	0.014	0.263**	0.003
Network Communications Only	0.084**	0.225	0.004
Software + Hardware Only	0.053	-0.037	0.001
Software + Communications Only	0.091***	0.082	0.0005
Hardware + Communications Only	0.064	0.203	-0.002
All three	0.128***	0.237**	0.001
Business Practices			
Practices	-0.003	0.002	-5e-5
Plant Size			
Employment Size-1988	4e-5***	6e-5**	---
Nationality of Control			
Foreign	0.083***	0.263***	0.0004
Capital Intensity			
Profitability change (1988-97)	0.037	---	-0.002
Initial Value			
Relative Wage – 1988	-0.580***	---	---
Profitability –1988	---	-0.889***	---
Employment Share – 1988	---	---	-0.033
R&D			
R&D ongoing performer	-0.036*	0.051	0.002***
Business Strategy			
Firm's business strategy	-0.001	-0.0002	9e-5
Region			
Quebec	-0.070	0.023	-0.001
Ontario	-0.030	-0.181**	-0.001
Prairies	-0.093	-0.076	0.0004
British Columbia	0.014	-0.273**	-0.001
Summary Statistics			
N	2362	2362	2362
F(degrees of freedom)	(18, 2343) 16.58	(17, 2344) 50.21	(17, 2344) 2.55
R ²	0.33	0.45	0.01

*** statistically significant at the 1% level; ** at the 5% level; * at the 10% level.

¹⁶ For more on changing regional distributions, see Baldwin and Brown (2001).

Turning to the equations for the relative wage rate (Table 10), employment share and relative profitability, we see that comprehensive technology use is significantly related to all three. Moreover, being foreign controlled has a positive effect on relative profitability and on the relative wage rate, but it does not affect growth in employment share. In the case of relative wage and relative profitability growth, there is regression-to-the-mean. Employment share also is characterized by regression-to-the mean, but this effect is not significant.

The R&D variable is only significantly related to the relative wage rate, and the sign of this effect is negative. As before, neither of the two other firm-effect variables (either innovation or business strategies) is significant. Once more, we argue that this probably means that the technology variable is not just capturing a firm fixed effect that is associated with these plants being generally more innovative.

In summary, advanced technology use emerges from the multivariate analysis as having a close relationship to the growth in relative labour productivity—and it is positively associated with higher relative wage rate growth, relative employment growth, and relative profitability growth.

Plants that manage to incorporate advanced technologies, to do so more intensively, and to combine advanced technologies across more functional groups also grew in terms of relative labour productivity. In turn, growth in relative labour productivity is translated into growth in market share.

It should be noted that advanced technology use not only had an indirect effect on growth in market share via relative productivity growth, it also had a direct effect, albeit in conjunction with innovation in general. This is probably because advanced technologies along with a general inclination to innovate increase the flexibility of firms and hence their ability to respond quickly to customer needs.

8. LONGITUDINAL PANEL DATA

The previous section of the paper examines the effect of technological change on plant productivity using cross-sectional establishment data on technology use in 1998 and longitudinal data on a plant's performance prior to 1998. Technology use at the end of the period was found to be closely related to productivity growth. This exercise, however, cannot ascertain how much of the relative productivity growth is due to recent increases in technology use and how much is due to lagged effects of higher technology use earlier in the period.

In this part of the paper, we investigate this issue using a panel dataset that links information on technology usage in 1993 and 1998, thereby permitting us to track changes in technology use and how it relates to plant performance. While this panel set offers inherent advantages, it has considerably fewer observations (less than 400) than the data used in the previous section (more than 2700 observations).

**Table 11: OLS Regressions Using Longitudinal Panel Data
Relative Productivity Growth for 1993 to 1997 as a Function of Advanced
Technology Use in 1993 and changes in technology use 1993 to 1998 (establishment
weighted)**

	CROSS SECTIONAL DATA	PANEL DATA		PANEL DATA
	Column 1	Column 2		Column 3
Intercept	0.431***	0.159	Intercept	0.173*
Advanced Technology Use (1998)			Advanced Technology Use (1993)	
One ICT Group Only	0.049	0.252**	One ICT Group Only	0.073
Two ICT Groups	0.060	0.223**	Two ICT Groups	0.084
All Three ICT Groups	0.150***	0.370***	All Three ICT Groups	0.315**
			Growth in Technology Use from 1993 to 1998	
			Growth	0.169**
Plant Size			Plant Size	
Employment –1993	6e-5**	4e-5	Employment –1993	5e-5
Nationality of Control (1998)			Nationality of Control (1998)	
Foreign	0.277***	-0.017	Foreign	-0.024
Initial Labour Productivity			Initial Labour Productivity	
Relative Labour Productivity – 1993	-0.555***	-0.321***	Relative Labour Productivity – 1993	-0.304***
R&D (1998)			R&D (1998)	
R&D performer	-0.015	-0.073	R&D performer	-0.048
Region (1998)			Region (1998)	
Quebec	-0.076	-0.169*	Quebec	-0.153
Ontario	-0.078	-0.066	Ontario	-0.033
Prairies	-0.078	-0.043	Prairies	-0.003
British Columbia	-0.096	-0.239**	British Columbia	-0.186*
Summary Statistics			Summary Statistics	
N	2713	389	N	389
F(degrees of freedom)	(11, 2701) 6.39	(11, 377) 2.64	F(degrees of freedom)	(12, 376) 2.32
R ²	0.28	0.19	R ²	0.17

*** statistically significant at the 1% level; ** at the 5% level; * at the 10% level.

The panel contains technology adoption and plant characteristics data for the period 1993 to 1998, and plant performance data for the period 1993 to 1997. The technology data were taken from two Statistics Canada technology surveys• the 1993 Survey of Innovation and Advanced Technology and the 1998 Survey of Advanced Technology in Canadian Manufacturing. Annual plant performance data were added from Statistics

Canada's Census of Manufactures. The 1998 Technology Survey was designed in such a way as to provide a longitudinal panel for a set of establishments that were also surveyed in 1993. They were selected to be representative of the continuing plant population over the period 1993 to 1998. Weights are used to derive population estimates of continuers from the sample.¹⁷

The new estimated model is basically the same as that outlined in equation 5; but end-period technology use is replaced with two variables—beginning period technology use and changes in technology use over the period. With the exception of the technology variables, the regression variables are the same as those used in previous regressions (Table 9) and will not be repeated here. But new technology variables were constructed to reduce the number of variables.

Four dichotomous technology variables were constructed for both 1998 and 1993 to capture separate, increasingly comprehensive types of advanced technology use. The four binary variables capture: 1) no advanced technologies used; 2) the use of one type, and only one type, of the three information and communication (ICT) advanced technologies (software, hardware and communications); 3) the use of two types of ICT technologies; and 4) the use of all three types. The no advanced technology use category is the excluded variable from the regressions.

One additional binary variable was created to capture growth in technology use during the period 1993 to 1998. This is a zero-one binary variable that takes a value of one if the establishment increased the 'comprehensiveness' of its technology use—if had changed from a non user to a user; went from a user of one ICT group to a multiple user; or went from a user of two ICT groups to a user of three ICT groups.

In order to provide a comparison to the previous estimates, the model is run on end-period technology use (column 1, Table 11) using the previous large data set and the new set of technology variables. Comprehensive technology use in 1998 is again found to be strongly correlated with growth in relative productivity. In order to benchmark the reduced panel data against this result, these data are used to run the same regression (column 2, Table 11). We find that each of the single user groups are significantly related to relative productivity growth as well as the comprehensive, combined category. This is a slightly stronger result than are obtained using the larger data set in that both single type and multiple types of technology use are significant.¹⁸

Replacing end-period technology with beginning period technology plus the change in technology, we find both beginning period technology use and change in technology use are significant for the panel data set. But the only beginning-period technology variable that is significant is the one capturing comprehensive use—that associated with adopting at least one advanced technology from all the three ICT groups (software, hardware and

¹⁷ For the moment, we omit correcting for the sample selection bias that arises because we are only covering continuers.

¹⁸ The difference in the two result suggests that the sample of firms that was used to develop the longitudinal technology data may not be perfectly representative of the population.

network communications). Thus, the lagged effect of opening period technology use comes from complex, comprehensive combinations of technologies.¹⁹ Moving up one stage of the ladder during the period, that is, using technologies from more ICT groups, also has a significant effect on relative productivity growth.

In summary, growth in technology use throughout the period is positively and significantly related to productivity growth. Higher productivity growth is associated with increasing levels of sophistication of technology use during the period. Plants that had broadened their use of advanced technology during the mid-nineties were also more likely to have enjoyed gains in productivity over the same period. What these results suggest is that the strong relationships between end-period technology use and growth in productivity found in the previous section are due both to higher initial levels of technology use and to growth in technology use over the period.

¹⁹ This accords with findings of Baldwin, Diverty and Sabourin (1995) who report that the most complex technology users in 1989 had performed best in the 1980s.

9. CONCLUSION

Our understanding of the amount and type of dynamics in the firm population has improved as a result of the development of longitudinal databases that allow us to measure the entry of new firms and the exit of old ones and how incumbents change market position as the result of growth and decline. While these databases allow us to measure some aspects of the effects of competition, they do not easily allow us to understand the underlying factors that are generating the change. For this, we need more detail on the underlying characteristics of firms and their plants. This paper has used data on one such characteristic—the incidence of use of advanced technologies—as well as the extent to which plants were pursuing a general strategy of innovation.

One question that is often posed is the extent to which new advanced technologies have an effect on the amount of change that is occurring. This paper has addressed this question by examining whether plants with different growth paths made different use of advanced technologies. Examining differences in success across plants reveals which set of advanced technologies are more appropriate than others. All plants have the same technological capabilities open to them at any point in time. But only a subset of the population chooses to adopt the new advanced technologies. By examining which plants and which advanced technologies were more closely associated with success than others, we isolate which of the technological paths were revealed by the competitive process to be the more successful.

We find that the adoption of many of the new advanced technologies was associated with greater growth in labour productivity and market share during the period 1988 to 1997. This finding replicates the results of an earlier paper that examined the relationship between plant performance in the 1980s and advanced technology use (Bylinsky, 1994; Baldwin, Diverty and Sabourin, 1995). This confirms our view that adoption of the new computer-driven advanced technologies is one of the keys to growth. And this growth is associated with improvements in labour productivity.

We have also found that communications technologies play a special role in growth. The new advanced technologies are built around the capabilities of computers. The computer-assisted machines not only allow for precision cutting, shaping and forming; computer technologies permit the acquisition of large amounts of information that in turn permit monitoring, evaluation, and rapid intervention. The capabilities of the new technologies have been referred to as bringing about the soft-manufacturing revolution (see Baldwin, Diverty and Sabourin, 1995). The new advanced technologies permit the advantages of machines to be effectively combined with human cognitive capabilities. And it is in this area where advanced technology adoption appears from the evidence adduced here to have had the greatest impact.

Several caveats to the results summarized above are, however, necessary. Our results do not show that simply purchasing advanced technologies necessarily leads to success. We have shown that plants that successfully implement new advanced technologies (those who report that they possess such equipment) do better than others. But implementation requires a number of skills. It requires a human-resource strategy to develop the

necessary worker skills (Baldwin, 1999, 2000). It requires that firms overcome financing problems associated with acquiring the new and untried technologies (Baldwin and Lin, 2001). Innovation, even on the technical side, is often accompanied by the development of best practices in quality control and engineering (Baldwin and Sabourin, 2000).

In this paper, we have focused on only one characteristic of manufacturing plants—their technological sophistication. Plants rarely distinguish themselves from others in one dimension. Baldwin and Johnson (1996, 1998) demonstrate that innovative and non-innovative firms differ in a number of dimensions simultaneously—in the emphasis placed on marketing, human resources, financing, and technological developments. Technology is just one part of the puzzle that creates a successful firm. That said, it is a key piece, as this paper has shown. Plants that adopt advanced technologies become more productive and grow more quickly. That they have to master a number of skills to be successful does not subtract from the central importance of mastering a way to successfully introduce the new advanced technologies into the business operations of manufacturing plants.

APPENDIX A

In order to examine growth over time, we use only those establishments for which economic performance data are available over a ten-year period. The period of study will be the ten-year period 1988 to 1997 inclusive. Of the 3,699 establishments in the original sample, 2,113 are present throughout the ten-year period.

Since reduced samples of continuing establishments such as those used here are sometimes not representative of the population as a whole, it is useful to examine the differences between the sample that we have used and the population to understand where differences arise. Size and industry distributions of the sample used are provided in Table A.1 for the total population of manufacturing establishments and for the ‘continuers’ population in 1997, for all establishments with at least 10 or more employees. With essentially the same industry composition as the total population, the ‘continuers’ in our sample are generally representative of the population of establishments, at least in terms of size and industry composition of the sample.

Table A.1: Size and Industry Distribution of Continuers and Total Manufacturing Population, Establishment Weighted

CHARACTERISTICS	TOTAL Population (10 or more employees)	CONTINUERS Population (10 or more employees)
	(percentage of establishments)	
Size		
• Small (10-99 employees)	83	72
• Medium (100–249 employees)	11	19
• Large (250 plus employees)	6	9
Industry (2-digit)		
• Chemicals & Petroleum	5	5
• Electrical & Electronics	6	5
• Fabricated Metals	20	18
• Furniture	5	6
• Industrial Machinery	7	7
• Non-Metallic Minerals	4	5
• Paper	3	4
• Primary metals	2	2
• Printing & Publishing	10	9
• Rubber & Plastics	6	6
• Textiles	10	10
• Tobacco & Beverages	1	1
• Transportation	6	5
• Wood	10	11
• Other	7	7
All	100	100

APPENDIX B

The results of ordinary least squares using numbers of technologies adopted, instead of whether an establishment had adopted at least one technology from a set of technologies, is presented in Table B.1. Numbers of technologies adopted at the end of the period are used with the larger cross-sectional database for the estimates in column 1 and with the smaller panel database for the estimates provided in column 2. Growth in the numbers of technologies adopted throughout the period, plus starting levels, from the panel dataset are used in the estimates provide ion column 3. Numbers of technologies used range from zero to sixteen. All regressions are establishment weighted.

Table B.1: OLS Regressions for Relationship between Relative Labour Productivity Growth and Numbers of Technologies Adopted for Cross Sectional and Longitudinal Panel Data (1993-1997)

	CROSS SECTIONAL DATA	PANEL DATA		PANEL DATA
Intercept	0.385***	-0.012	Intercept	-0.017
Numbers of Advanced Technologies Used (1998)			Numbers of Advanced Technologies Used (1993)	
Technologies - 1998	0.011*	0.025**	Technologies – 1993	0.027*
			Growth in Numbers of Technologies Used (1993-98)	
			Growth	0.024**
Business Practices (1998)			Business Practices (1998)	
Practices	0.002	9e-5	Practices	9e-5
Plant Size			Plant Size	
Employment –1993	3e-5	3e-5	Employment –1993	2e-5
Nationality of Control (1998)			Nationality of Control (1998)	
Foreign	0.270***	-0.007	Foreign	-0.009
Initial Labour Productivity			Initial Labour Productivity	
Relative Labour Productivity – 1993	-0.554***	-0.326***	Relative Labour Productivity – 1993	-0.326***
R&D (1998)			R&D (1998)	
R&D performer	-0.033	-0.111	R&D performer	-0.111
Business Strategy (1998)			Business Strategy (1998)	
Firm's business strategy	0.005	0.015	Firm's business strategy	0.015
Region (1998)			Region (1998)	
Quebec	-0.078	-0.193*	Quebec	-0.189*
Ontario	-0.080	-0.088	Ontario	-0.085
Prairies	-0.086	-0.040	Prairies	-0.037
British Columbia	-0.096	-0.244**	British Columbia	-0.238**
Summary Statistics			Summary Statistics	
N	2713	389	N	389
F(degrees of freedom)	(11, 2701) 6.74	(11, 377) 2.94	F(degrees of freedom)	(12, 376) 2.70
R ²	0.28	0.20	R ²	0.20

*** statistically significant at the 1% level; ** at the 5% level; * at the 10% level.

REFERENCES

- Baily, M., C. Hulten, and D. Campbell. 1992. "Productivity Dynamics in Manufacturing Plants". *Brookings Papers on Economic Activity: Microeconomics 1992*. pp. 187-267.
- Baldwin, J.R. 1995. *The Dynamics of Industrial Competition. A North American Perspective*. Cambridge: Cambridge University Press.
- Baldwin, J.R. 1996a. "Productivity Growth, Plant Turnover and Restructuring in the Canadian Manufacturing Sector," in D. Mayes (ed.) *Sources of Productivity Growth* Cambridge: Cambridge University Press.
- Baldwin, John. 1996b. "Innovation: The Key to Success in Small Firms," in J. de la Mothe and G. Paquette (eds.) *Evolutionary Economics and the New International Political Economy*. London: Pinter.
- Baldwin, John. 1998. "Were Small Firms the Engines of Growth in the 1980s?" *Small Business Economics* 10: 349-64.
- Baldwin, John. 1999. *Innovation, Training and Success*. Research Paper No. 137. Analytical Studies Branch. Ottawa: Statistics Canada.
- Baldwin, John. 2000. *Innovation and Training in New Firms*. Research Paper No. 123. Analytical Studies Branch. Ottawa: Statistics Canada.
- Baldwin, J. R., D. Beckstead, N. Dhaliwal, R. Durand, V. Gaudreault, T. Harchaoui, J. Hosein, M. Kaci, J.P Maynard. 2001. *Productivity Growth in Canada*. Catalogue 15-204-XPE. Ottawa: Statistics Canada.
- Baldwin, J.R. and M. Brown. 2001. *Dynamics of the Canadian Manufacturing Sector in Metropolitan and Rural Regions*. Research Paper No. 169. Analytical Studies Branch. Ottawa: Statistics Canada. Forthcoming.
- Baldwin, J. R., William Chandler, Can Le and Tom Papailiadis. 1994. *Strategies for Success: A Profile of Growing Small and Medium-sized Enterprises in Canada*. Catalogue 61-523R E. Ottawa: Statistics Canada.
- Baldwin, J. R. and N. Dhaliwal. 2001. "Heterogeneity in Labour Productivity Growth in Manufacturing: Differences Between Domestic and Foreign Controlled Establishments," in *Productivity Growth in Canada*. Catalogue 15-204-XPE. Ottawa: Statistics Canada. pp. 51-76.
- Baldwin, J. R., B. Diverty. 1995. *Advanced Technology Use in Canadian Manufacturing Establishments*. Research Paper No. 85. Analytical Studies Branch. Ottawa: Statistics Canada.

Baldwin, J. R., B. Diverty, and D. Sabourin. 1995. *Technology Use and Industrial Transformation: Empirical Perspectives*. in T. Courchene (ed.) *Technology, Information, and Public Policy*. John Deutsch Institute for the Study of Economic Policy. Kingston, Ontario: Queens University. (see also Research Paper No. 75, Analytical Studies Branch. Ottawa: Statistics Canada).

Baldwin, John, Tara Gray, Joanne Johnson, Jody Proctor, Mohammed Rafiquzzaman and David Sabourin. 1997. *Failing Concerns: Business Bankruptcy in Canada*. Catalogue 61-525-XPE. Ottawa: Statistics Canada.

Baldwin, J.R. and P.K. Gorecki. 1991. "Productivity Growth and the Competitive Process: the role of firm and plant turnover," in Geroski, P.A. and Schwalbach, J. (eds.) *Entry and Market Contestability: An International Comparison*. Oxford: Basil Blackwell.

Baldwin, J.R. and J. Johnson. 1996. "Business Strategies in Innovative and Non-Innovative Firms in Canada," *Research Policy* 25: 785-804.

Baldwin, J.R. and J. Johnson. 1998. "Innovator Typologies, Related Competencies, and Performance," In *Microfoundations of Economic Growth: A Schumpeterian Perspective*. Edited by G. Eliasson, C. Green, and C. McCann Jr. The University of Michigan Press. Ann Arbor, MI. pp. 227-53.

Baldwin, J.R. and J. Johnson. 1999. "Entry, Innovation and Firm Growth", in *Are Small Firms Important? Their Role and Impact*. Edited by Z. Acs. Dordrecht: Kluwer. 1999. pp. 51-71.

Baldwin, J.R. and Petr Hanel. 2002. *Knowledge Creation and Innovation in an Open Economy*. Cambridge: Cambridge University Press. Forthcoming.

Baldwin, J.R. and Z. Lin. 2001. "Impediments to Advanced Technology Adoption for Canadian Manufacturers," *Research Policy*. Forthcoming

Baldwin, J. R. and D. Sabourin. 2000. "Innovative Activity in Canadian Food Processing Establishments: The Importance of Engineering Practices". *International Journal of Technology Management*, Vol. 20, No. 5, pp. 511-527.

Baldwin, J.R., D. Sabourin, and M. Rafiquzzaman. 1996. *Benefits and Problems Associated with Technology Adoption in Canadian Manufacturing*. Catalogue 88-514XPE. Ottawa: Statistics Canada.

Baldwin, J. R., David Sabourin, and D. West. 1999. *Advanced Technology in the Canadian Food-Processing Industry*. Catalogue No. 88-518-XPE.

Beaumont, N.B. and R.M. Schroder. 1997. "Technology, Manufacturing Performance and Business Performance amongst Australian Manufacturers". *Technovation* Vol. 17 No.6, pp. 297-307.

Bartelsman, E. and P. Dhrymes. 1998. Productivity Dynamics: U.S. Manufacturing Plants, 1972-1986. *Journal of Productivity Analysis*, Vol 9, pp. 5-34.

Bylinsky, G. 1994. "The Digital Factory," *Fortune* November 14, 1994.

Caves, R.E. 1982. *Multinational Enterprise and Economic Analysis*. Cambridge: Cambridge University Press.

Doms, M., T. Dunne, and M. Roberts. 1994. *The Role of Technology Use in the Survival and Growth of Manufacturing Plants*. Mimeo. U.S. Bureau of the Census, Center for Economic Studies.

Doms, M., T. Dunne, and K. Troske. 1997. "Workers, Wages and Technology". *The Quarterly Journal of Economics*. Vol. CXII, pp. 253-290.

Dunne, T. and J. Schmitz Jr. 1995. "Wages, Employment Structure and Employer Size-Wage Premia: Their Relationship to Advanced-technology Usage at U.S. Manufacturing Establishments". *Economica*. Vol. 62, pp. 89-107.

Geroski, P. 1989. "Entry, Innovation and Productivity Growth". *The Review of Economics and Statistics*. Vol. LXXI, pp. 672-578.

Jensen, J., McGuckin, R. and K. Stiroh. 2000. "The Impact of Vintage and Survival on Productivity: Evidence from Cohorts of U. S. Manufacturing Plants". Mimeo. U.S. Bureau of the Census, Center for Economic Studies.

Johnson, Joanne, John Baldwin and Christine Hinchley. 1997. *Successful Entrants: Creating the Capacity for Survival and Growth*. Catalogue No. 61-524-XPE. Ottawa: Statistics Canada.

McGuckin, R., Streitwieser, M. and M. Doms. 1996. *The Effect of Technology Use on Productivity Growth*. Mimeo. U.S. Bureau of the Census, Center for Economic Studies.

Power, L. 1998. "The Missing Link: Technology, Investment and Productivity". *The Review of Economics and Statistics*. Vol. 80, No. 2, pp. 300-313.

Rischel, T. D., Burns, O. M. 1997. "The Impact of Technology on Small Manufacturing Firms". *The Journal of Small Business Management*. Vol. 35I, pp. 2-10.

Salter, W.E. 1966. *Productivity and Technical Change*. Cambridge: Cambridge University Press.

Sabourin, D. and D. Beckstead. 1999. *Technology Adoption in Canadian Manufacturing 1998*. Working Paper ST-99-05. Ottawa: Science, Innovation and Electronic Information Division, Statistics Canada.

Stoneman, P. and M. J. Kwon. 1996. "Technology Adoption and Firm Profitability". *The Economic Journal*. Vol. 106, pp. 952-962.

Ten Raa, T. and E. N. Wolff. 1999. *Engines of Growth in the U.S. Economy*. ECIS/SCED Conference on Economic Growth, Trade and Technology, 3-4 October, Eindhoven.

Tracey, M., Vonderrembse, M. A., Lim, J. S. 1999. "Manufacturing Technology and Strategy Formulation: Keys to Enhancing Competitiveness and Improving Performance". *Journal of Operations Management*. Vol. 17, pp. 4111-4128.

Van Meijl, H. 1995. "Endogenous Technological Change: The Case of Information Technology. Theoretical Considerations and Empirical Results". MERIT, University of Limburg, Maastricht, p. 289.